

Georges Bizet

Nº 3

CARMEN

OTTAVINO Allegretto moderato

ppp

ten.

un poco meno pp

ten.

meno p

tr.

cresc. poco a poco

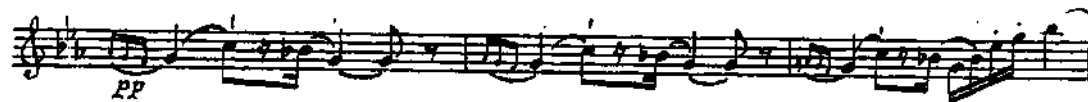
ten.

tr.

mf

f

OTTAVINO



IV. SYMPHONIE

Kleine Flöte

Peter I. Tschaiakowsky, Op. 36

III. SCHERZO

Pizzicato ostinato

Allegro A 32 B 28 C 14 D 42 Meno mosso
(Ob.) (F. 1.2)

16 11 17

ff Tempo I 14 F (K. 2) 9 p

2 G 12 129 H 2 2 2

piu f mf

cresc.

2 3 15

SEMIRAMIDE

SINFONIA

G. ROSSINI

Allegro vivace

Le Ott.
mf rin. for. *ff*

Musical staff for Oboe 1 (Le Ott.). The notation is in G major and 2/4 time. It begins with a dynamic of *mf rin. for.* and ends with a *ff* dynamic.

Poco mosso

p mosso. *f*

Musical staff for Oboe 2 (Le Ott.). The notation is in G major and 2/4 time. It begins with a dynamic of *p mosso.* and ends with a *f* dynamic.

Allegro

Le Ott.
mp

Musical staff for Oboe 1 (Le Ott.). The notation is in G major and 2/4 time. It begins with a dynamic of *mp*.

Fl. solo

p *f* *p* *Ott.* *Ott.*

Musical staff for Flute solo. The notation is in G major and 2/4 time. It begins with a dynamic of *p*, followed by *f*, *p*, and then *Ott.* (Oboe) markings.

Musical staff for Oboe 2 (Le Ott.). The notation is in G major and 2/4 time.

Fl. solo
p *f* *p*

Musical staff for Flute solo. The notation is in G major and 2/4 time. It begins with a dynamic of *p*, followed by *f* and *p*.

Musical staff for Oboe 2 (Le Ott.). The notation is in G major and 2/4 time.

Ott. (Ott.)
f *p*

Musical staff for Oboe 1 (Le Ott.). The notation is in G major and 2/4 time. It begins with a dynamic of *f* and ends with *p*.

Musical staff for Oboe 2 (Le Ott.). The notation is in G major and 2/4 time.

LA GAZZA LADRA
SINFONIA

G. ROSSINI

The image displays a musical score for the Oboe (Ott.) part, consisting of four staves. The first staff begins with the marking 'Ott.' and a dynamic marking of *p*. The music is written in a treble clef with a key signature of one sharp (F#) and a 2/4 time signature. The notation includes various rhythmic patterns, such as eighth and sixteenth notes, and rests, with some notes beamed together. The second and fourth staves are connected to the first and third staves by double lines, indicating they are part of the same melodic line. The score concludes with a double bar line.

L'ITALIANA IN ALGERI
SINFONIA

G. ROSSINI

Allegro
Solo

Musical score for L'Italiana in Algeri, Sinfonia by G. Rossini. The score consists of four staves of music. The first staff is marked 'Solo' and 'Allegro'. The second staff is marked 'Solo' and 'p dolce'. The third and fourth staves continue the musical notation.

AIDA

G. VERDI

Allegro mosso $\text{♩} = 144$

I.
I. e Ott. *più toco. e leggero*
più toco. e leggero

più toco come prima
più toco come prima

I. e Ott. Ott. Solo
II. *pp*

Othello

Atto Primo

Giuseppe Verdi

Allegro ♩=120

6

9

13

17

23

25

32

36

39

41

47

p

mf

pp

p

f

p

f

p

pp leggiero

f

Allegro con brio ♩=120

Wald / Peters

[Allegro con brio] [Lo stesso movimento]

Musical score for the first section, measures 1-20. The score is written on five staves in treble clef with a key signature of two sharps (F# and C#). Measure 1 is marked with a first ending bracket. Measures 5, 10, 15, and 20 are marked with their respective measure numbers. The music features a melodic line with eighth and sixteenth notes, and a rhythmic accompaniment of eighth notes. A dynamic marking of *ff* (fortissimo) is present at measure 15.

Allegro moderato $\text{♩} = 88$

Atto Terzo

Musical score for the second section, measures 26-29. The score is written on two staves in treble clef with a key signature of two sharps (F# and C#). Measure 26 is marked with its measure number. The music features a melodic line with eighth and sixteenth notes, and a rhythmic accompaniment of eighth notes.

OVERTURE - THE SILKEN LADDER

ROSSINI

13 $\text{♩} = c. 126$ *Soli with Oboe*

p

cresc. *f*

I. Stravinsky

L'oiseau de feu :
Variation de l'oiseau de feu⁴

Handwritten musical score for 'L'oiseau de feu' Variation 4, measures 9-14. The score is written on a single staff in treble clef with a key signature of two sharps (F# and C#). The time signature is 3/8. Measure 9 is marked with a boxed '9', a tempo marking of '♩ = 76', and the instruction 'Picc.'. The music features triplet patterns and dynamic markings of *p* and *mf*. Measure 10 is marked with a boxed '10' and a first ending bracket. Measure 11 is marked with a boxed '11' and a dynamic marking of *mf*. Measure 12 is marked with a boxed '12' and dynamic markings of *sf* and *p*. Measure 13 is marked with a boxed '13' and dynamic markings of *sff* and *mp*. Measure 14 is marked with a boxed '14' and a dynamic marking of *mp*. The score includes various musical notations such as slurs, accents, and dynamic markings.

15

2

16

sempre crescendo

17

18

p subito

meta in fl. gr.

Handwritten musical score for a single staff, measures 12-14. The score includes the following elements:

- Measure 12:** Starts with a circled *rit.* and *Picc.* instruction.
- Measure 13:** Contains the instruction *8. rall.* and the tempo marking *Lento* with a metronome marking of $\text{♩} = 58$ and the note *(environ)*.
- Measure 14:** Features a *ppp* dynamic marking and a *f sub.* instruction.
- Measure 10:** A measure of whole rest is indicated at the end of the staff.

The score is written on a single staff with a treble clef and a key signature of one sharp (F#). The notes are: Measure 12 (F#, G, A, B, C, D, E, F#); Measure 13 (F#, G, A, B, C, D, E, F#); Measure 14 (F#, G, A, B, C, D, E, F#). The notes in measures 12 and 13 are beamed together. The notes in measure 14 are also beamed together. The notes in measure 10 are whole rests.